

BlixOS Professional  
Pre-Beta (Build 1215)

Blix Corporation

# BlixOS Professional

Documentation



# About

---

BlixOS Professional is a second edition version of BlixOS, which is built on top of a modified LYNHOST kernel. The kernel has been named as 'Hybird' due to its fast processing speed. BlixOS provides intuitive User-Interface which is very easy to understand and use.

## What's new with the BlixOS desktop?

New features on the BlixOS desktop make it easier to organize and manage multiple windows. You can switch easily between open windows so that you can focus on important programs and files. Other new features help you add a personal touch to your desktop.

### Gadgets

You can display gadgets on your desktop and use the Peek features to temporarily view your desktop gadgets without minimizing or closing the windows you're working with.

### Desktop background

Your desktop background doesn't have to be a single picture anymore. With BlixOS, you can display a slide show of pictures, instead. You can create your own slide show from your personal collection of pictures.

### Thumbnail Preview

When you open multiple windows on the desktop, it can sometimes be a challenge to view separate windows and switch between them.

You can use Peek to take a quick look at other open windows without clicking away from the window you are currently working on. Peek makes it easy for you to preview the contents of open windows and switch to the one you want.

When you point to a taskbar button, you'll see a thumbnail-sized preview of the window, whether the content of the window is a document, a photo, or even a running video.

## What's new in BlixOS Professional?

Here's a look at some of the new features in BlixOS Professional. For more information about new features, go to the BlixOS website.

### Faster, more responsive performance

Nobody likes to wait. So we've focused on the basics that can impact the speed of your PC. BlixOS Professional starts up, shuts down, and responds faster.

## **Better on laptops**

BlixOS Professional helps extend the battery life of your laptop with power-saving features, including dimming the display if you don't use your computer for a while.

## **Find more things faster with improved search**

Thanks to an improved search, you can find more things in more places—and do it faster—than in previous versions of BlixOS. Just type a few letters into the search box to see a list of relevant items, such as documents, pictures, music, and e-mail.

Few people store all their files in one place anymore. BlixOS Professional is designed to search external hard drives, PCs on a network, and other locations. It also speeds up your search by displaying recommendations based on previous queries. Overwhelmed by the results? New dynamic filters can instantly narrow results by categories such as date or file type.

## **Theme packages reflect your style**

With BlixOS Professional, you start with a clean desktop and get to decide how it looks. We provide the templates, or themes, and you can choose the color or format.

New theme packages include rich backgrounds, 6 window colors, sound schemes, and screen savers. You can download new themes and create your own to share with friends and family. There are plenty of ways to make it yours.

## **Take control of problems**

Action Center consolidates notifications from multiple BlixOS features. When BlixOS needs your attention, you'll see an Action Center icon in the notification area and can find out more by clicking it. No time to look at the alert right away? Action Center will keep the information for you to check later.

## **Introducing TouchSense**

TouchSense is an upgraded version of TouchFurl, which is found in BlixOS Home. Using a keyboard and mouse are great for many tasks, but they aren't always the easiest way to do things. If you've got a touchscreen, you can just touch your computer screen for a more direct and natural way to work. Use your fingers to scroll and zoom. Large touch-sensitive areas on the Start menu and the taskbar make TouchSense easier to use. If you have a webcam, then you can also control your PC right from your sofa!

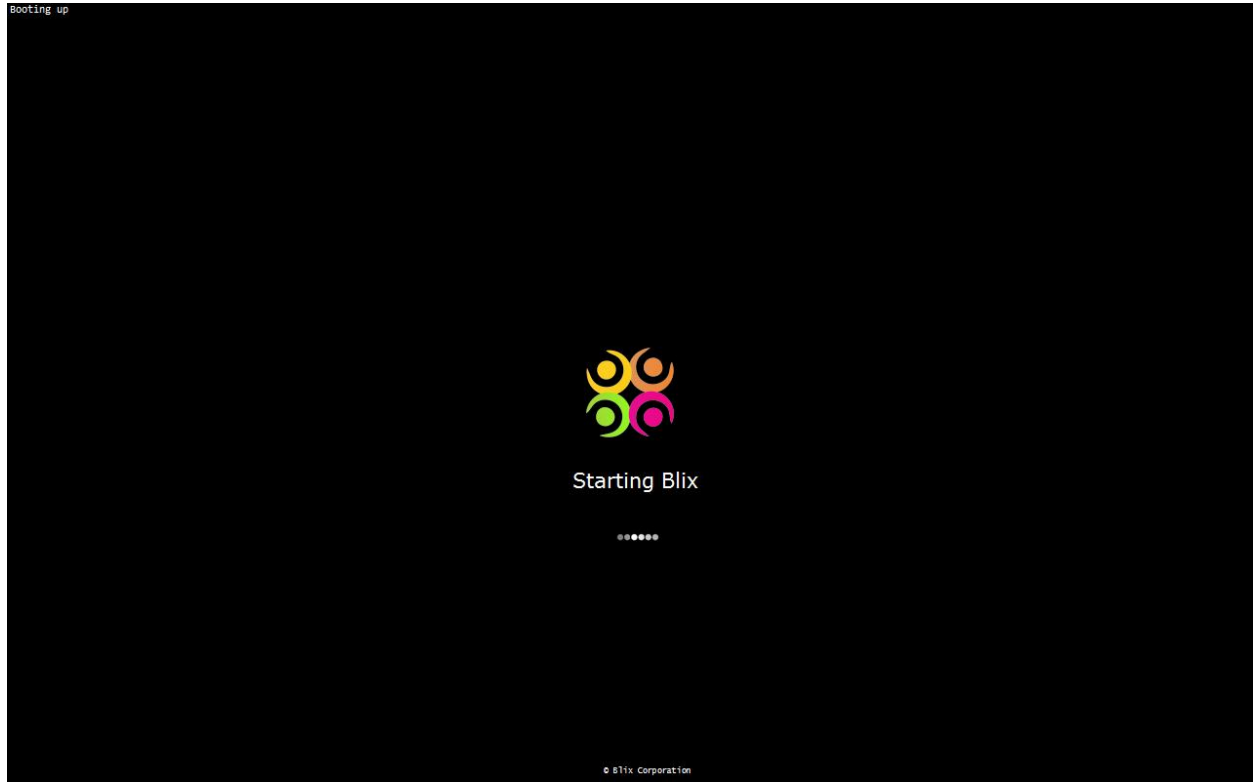
## **Better Tablet PC support**

Handwriting recognition takes a big step in BlixOS (version Ultimate onwards). Beginning with greater accuracy and speed, BlixOS improves pen input in several ways. You can create personalized custom dictionaries for handwriting recognition and use the new languages supported in BlixOS.

# Previews

---

## Boot Screen



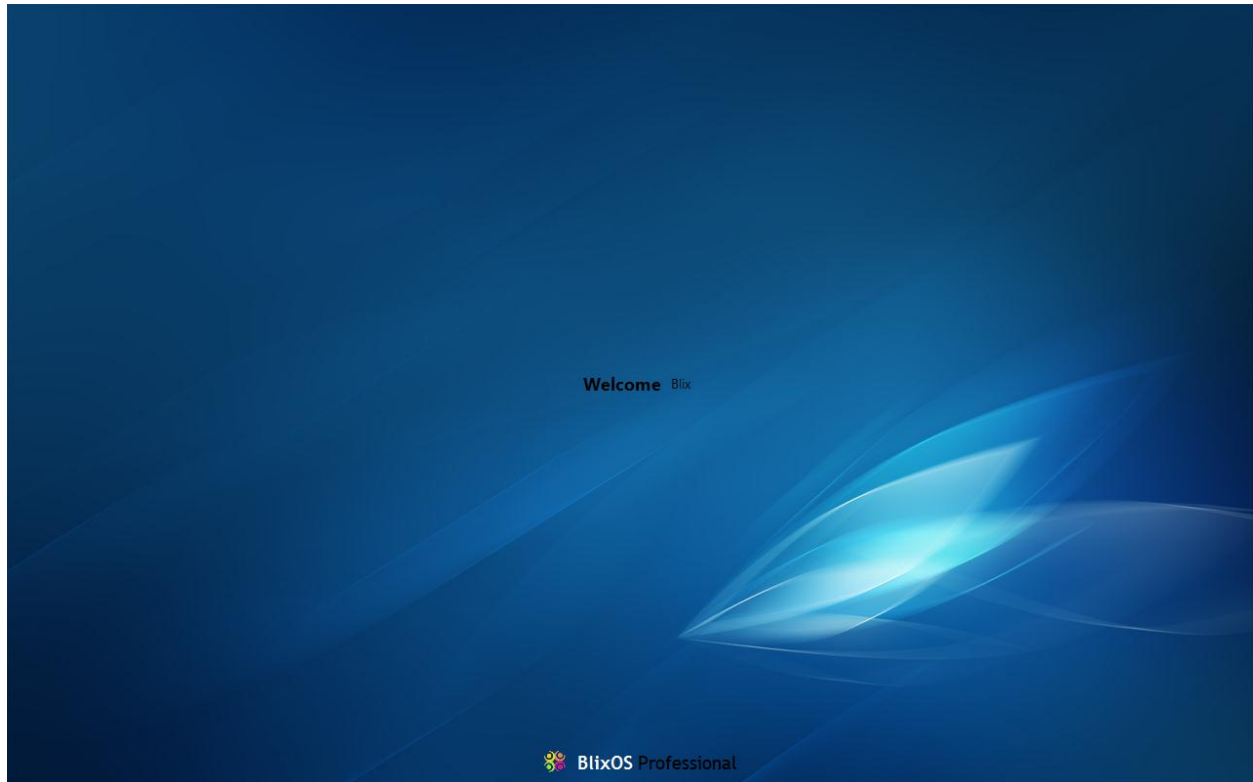
The boot screen has been completely re-designed by BlixOS developers to give it a neat look. Sometimes, the logo glows while booting (yes, it happens!). You can also change the logo or the background to suit your needs. The progress bar shows the booting progress and on the top-left corner of the screen, you can see the progress status.

`Booting up`

*Here, you can see the booting process.*

This feature is disabled by default but you can enable it by tweaking some settings in BlixOS. This feature is very useful in case there is some problem in booting, you can see where the booting stops (Example: If the booting stops at 'Loading blix files' then, some BlixOS files may be corrupt or has been damaged).

## Welcome Screen



This is the welcome screen which is displayed while your desktop is being prepared. If you have protected your computer with a password, you will be asked for your password before the desktop is ready for display. You can even change the login wallpaper with the one you like.

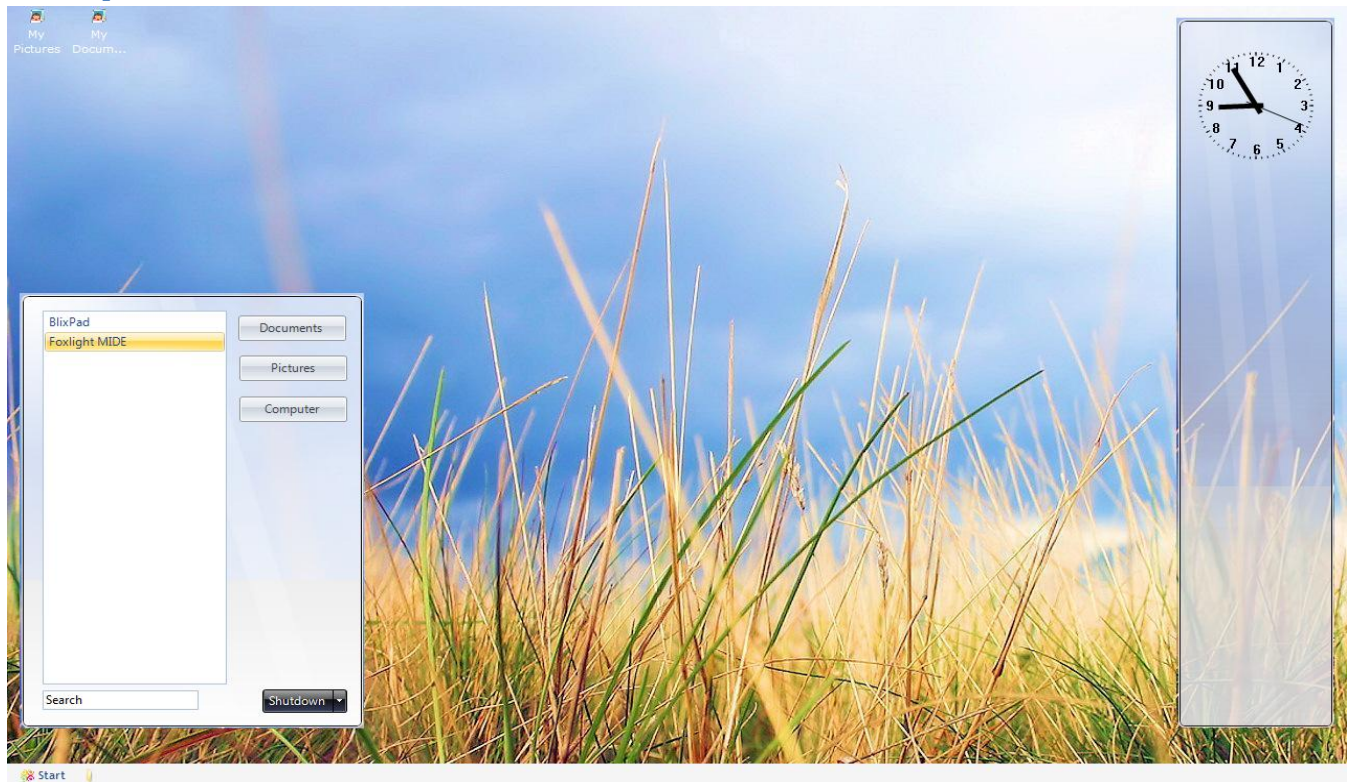
**Welcome** Blix

*Here, your username is displayed with the 'Welcome' text. If you have not specified any username then you'll only see the 'Welcome' text.*

 **BlixOS Professional**

*The version of BlixOS, that you are running, is displayed at the bottom of the screen. If you perform an 'Anytime Upgrade' inside BlixOS, this text will change to the version you have selected while upgrading (Example : BlixOS Ultimate).*

## Desktop

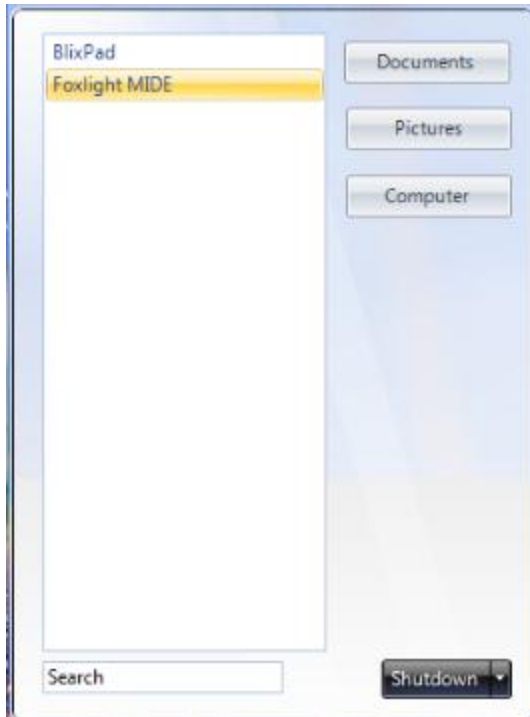


The desktop sports a neat look with a small taskbar, a gadget bar and icons. You can add new gadgets or make you own online. You can also remove gadgets if you don't want them. BlixOS Professional includes a new, revamped start menu from where you can launch programs or search for files. You can change the view of the desktop from the Personalize option, available when you right-click on the desktop. We change the theme of BlixOS Professional to BlixOS Home and here's how it looks:



“The old-fashion look in the trendy one”

## Start Menu



The start menu offers much more than simply launching programs. In BlixOS Professional, you can also search for programs, arrange them, or delete them.

## Gadget Bar

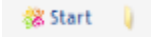


You can add gadgets that suit your needs. Example, you can add a currency converter gadget and convert between currencies without opening any new program or doing it online. You can also remove gadgets if you don't like them. Create your own gadget and mail the source of the gadget to us. We'll happily include it in our OS if we like them (We won't sell off your source or use them).

## The Taskbar



The new BlixOS taskbar allows you to re-arrange or switch between windows easily.

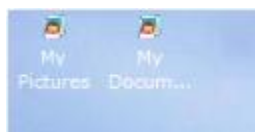


*Can you see a folder icon right next to the Start button? Don't think that this is a button to open a folder or create one! By clicking this icon, you can open and view all the windows at once. By keeping it pressed, you can switch between windows, one at a time.*



*When you hover your mouse pointer on a taskbar item, you can see the live preview of the item without opening the whole window.*

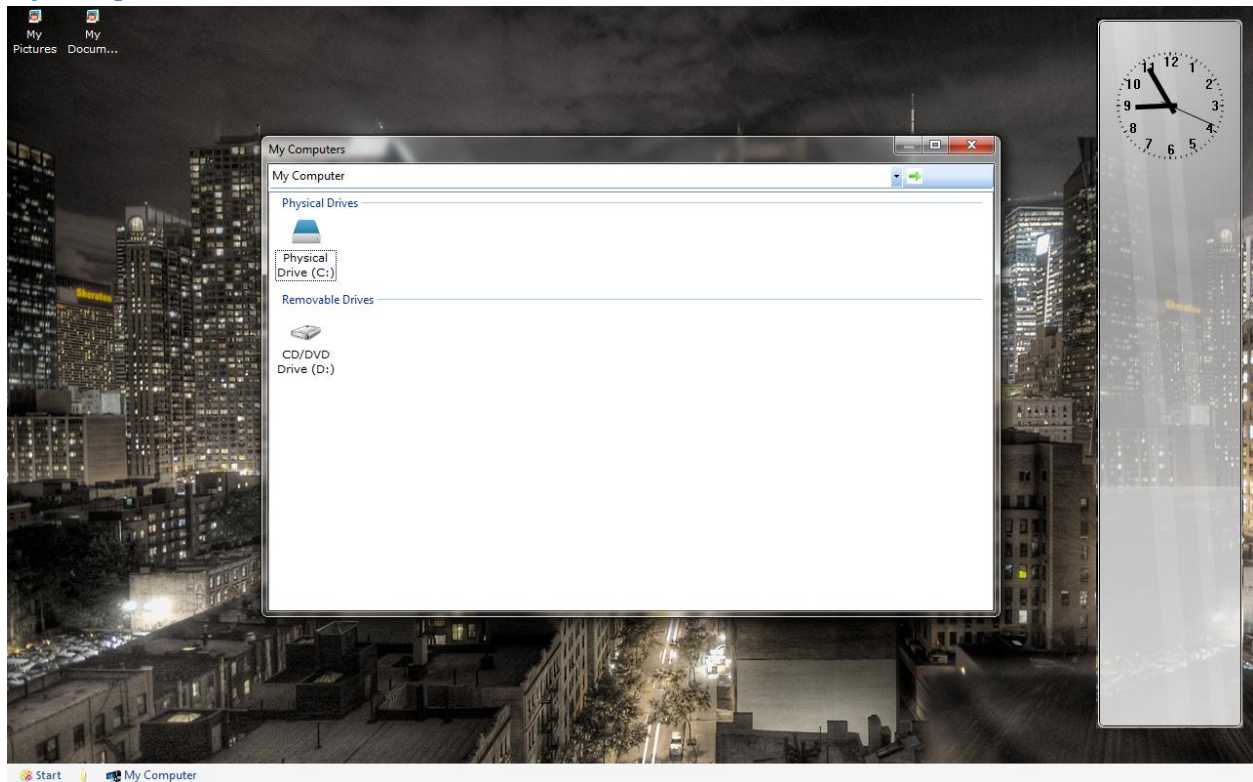
## Icons



Icons are graphical representations of files, programs, or shortcuts. You can find icons on the desktop, taskbar, Start menu, and throughout BlixOS. Clicking them will launch the respective applications without the need to track them down from the start menu or the hard drive and then launch it.



## My Computer

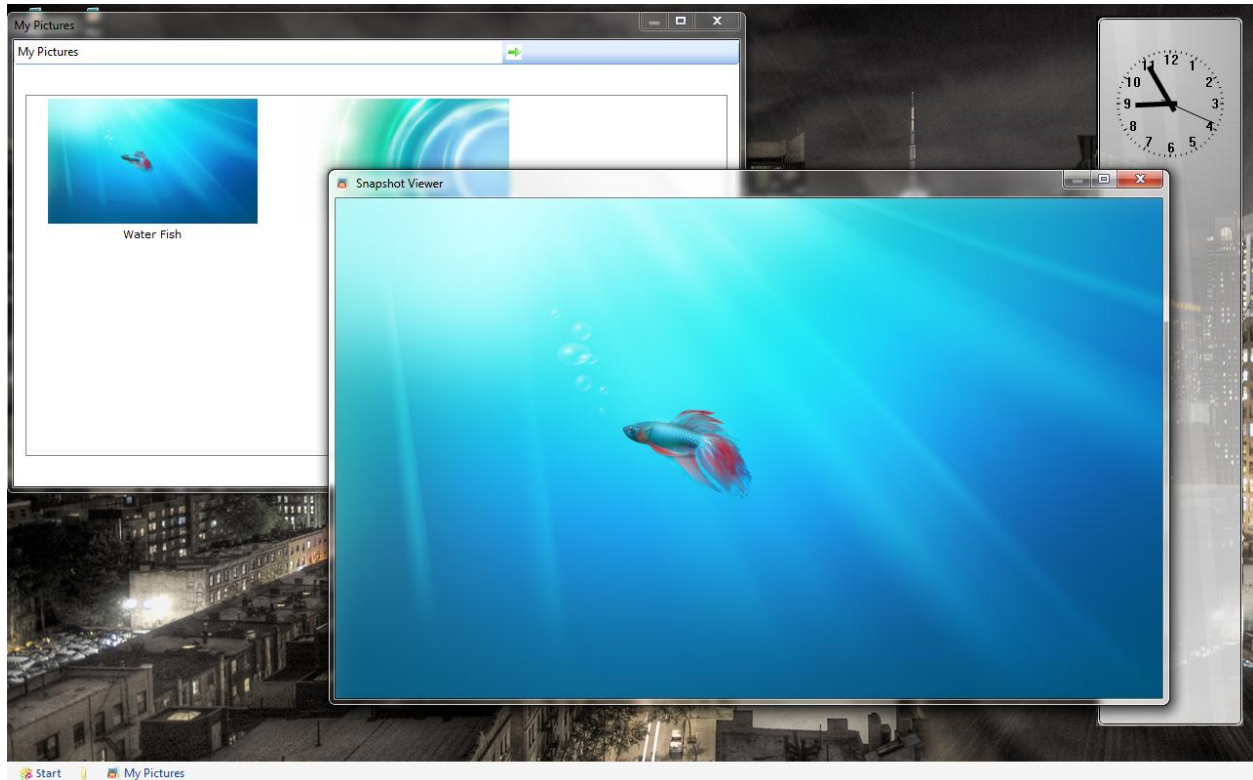


You can view all the data present in your computer through My Computer. You can delete, modify, open, rename or tag files.



*Drives are arranged in a manner so that it is easy to understand which type of drive it is. Clicking on the drive shows what's inside that drive and clicking on the folder present shows what's inside them.*

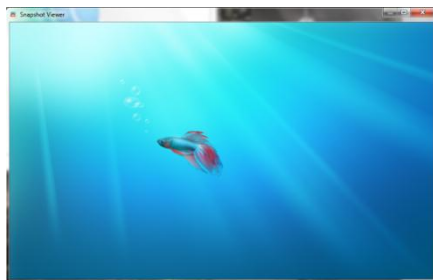
## My Pictures



My Picture contains all you pictures present on your computer. You can view them, edit them (using Blix Paint) or convert them between various formats.

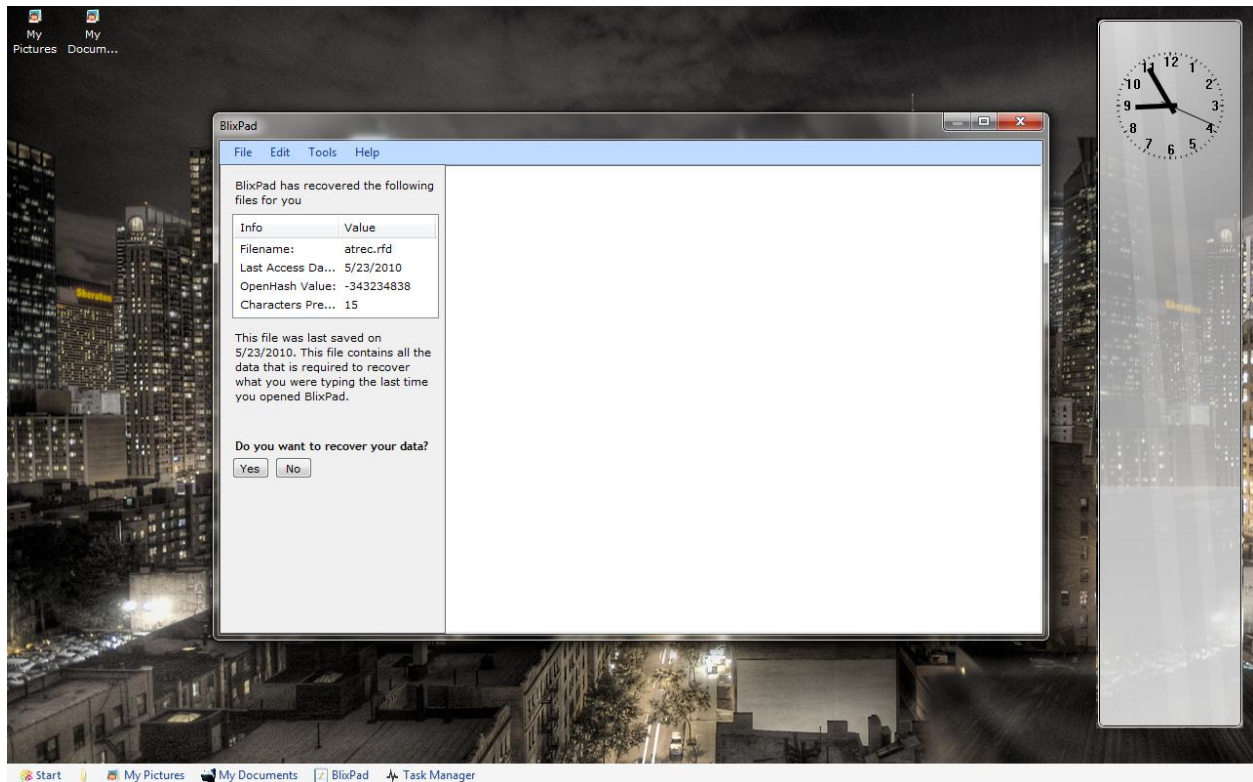


*All pictures are shown in the Thumbnail view to make it easier to see which picture is it.*

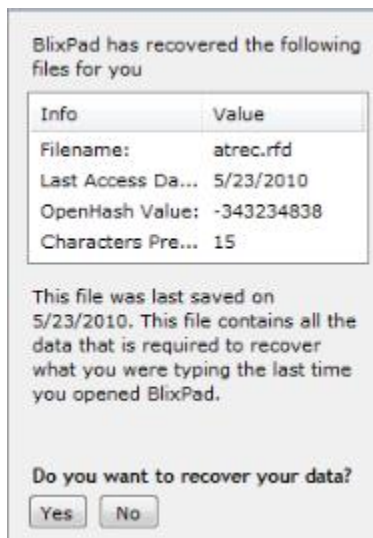


*When you double-click on a picture, it opens in the Snapshot Viewer. Here you can set them as Desktop Background, Flip or rotate it or edit it using Paint.*

## BlixPad

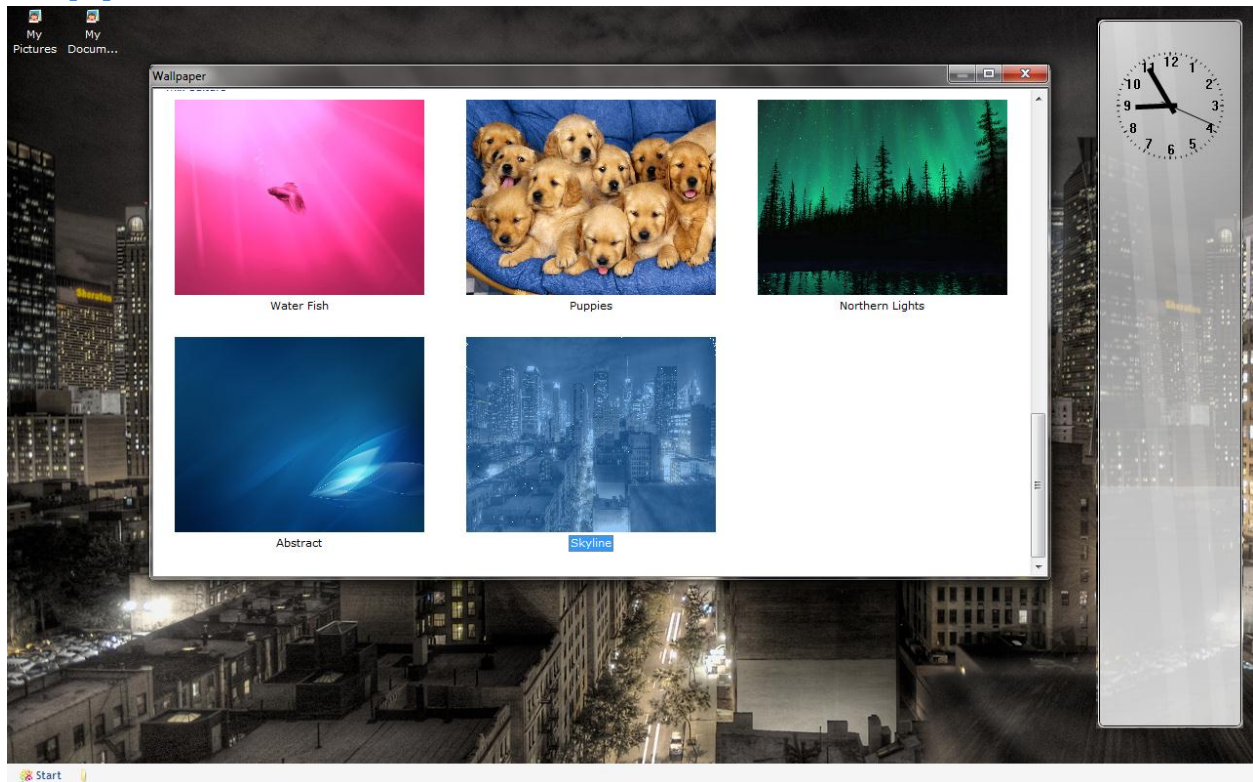


BlixPad is the BlixOS's native text editor with multiple features that WordPad or Notepad does not offer. You can open different formats and save them in those formats too. You can change the font or color of the text. It also has a very important feature that WordPad/Notepad doesn't have- AutoRecovery, which simply means that BlixPad can recover you files if you forget to save them.



*The auto-recovery box pops out when it sees that you have forgotten to save your file the last time you opened BlixPad. You can see the information about the auto-recovery file in the info box. When you click 'Yes', the auto-recovery box fades out and loads the data into the typing box.*

## Wallpapers



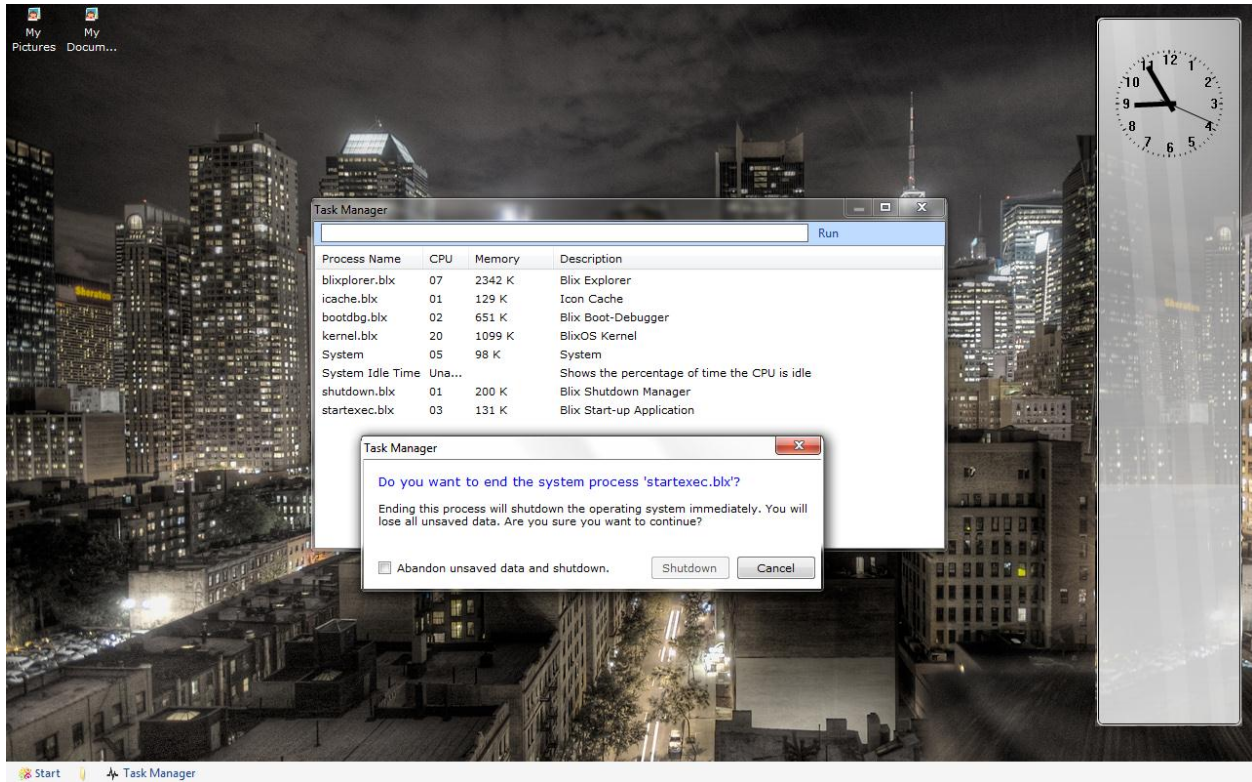
You can change the desktop wallpaper from the Wallpaper windows, which can be launched from the Personalize window.



*Selecting the wallpaper automatically changes the desktop wallpaper in real time without clicking on the usual 'OK' button, which was present in Windows XP.*



## Task Manager



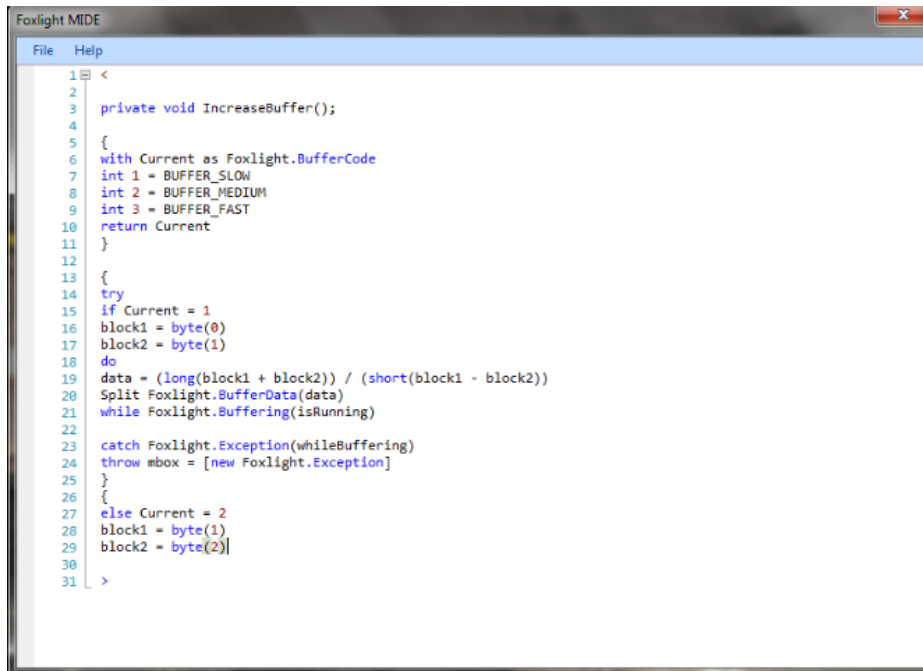
Task Manager allows you to terminate processes (running applications) if they are not responding or you don't want them to be running. You can also debug them (if running BlixOS in kernel debugging mode) if they crash frequently or does not respond at times.

Process Name	CPU	Memory	Description
blixplorer.blx	07	2342 K	Blix Explorer
icache.blx	01	129 K	Icon Cache
bootdbg.blx	02	651 K	Blix Boot-Debugger
kernel.blx	20	1099 K	BlixOS Kernel
System	05	98 K	System
System Idle Time	Una...		Shows the percentage of time the CPU is idle
shutdown.blx	01	200 K	Blix Shutdown Manager
startexec.blx	03	131 K	Blix Start-up Application

*The processes are shown in the list, which contains just enough data for you to understand what type of process it is. To terminate a process, right click on it and then click 'Terminate'. Warning: Terminating processes can lead to undesired changes and may result in loss of data.*

## Developer Tools: Foxlight MIDE

Foxlight® is a special piece of software which enhances online entertainment and offers rich media irrespective of the speed of internet or the browser you are running. Foxlight® can be controlled using a special language called FoxScript – which is similar to C#. To make a FoxScript, you'll need Foxlight SDK (download from <http://www.research.studyblix.com/>). But we cannot provide this large piece of software in BlixOS so we have included Foxlight MIDE (Mini Integrated Development Environment), which allows you to create and save scripts.

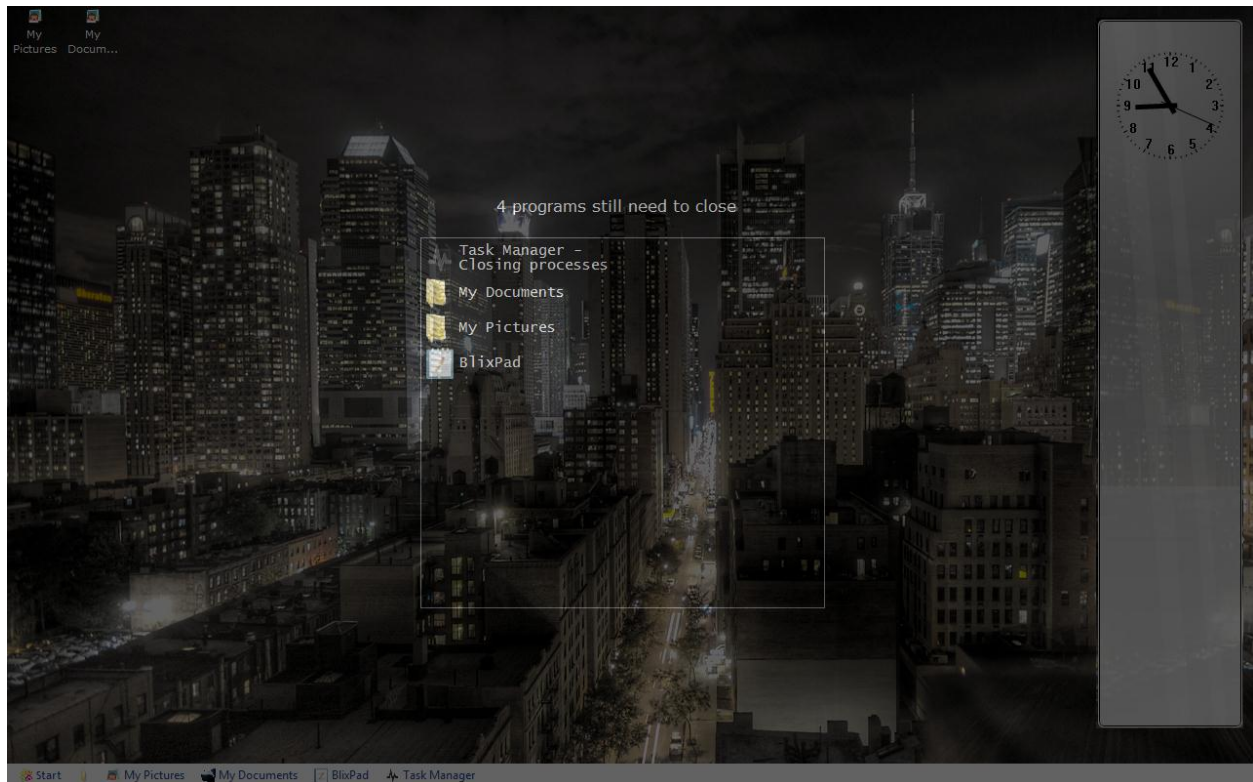
A screenshot of the Foxlight MIDE application window. The window title is "Foxlight MIDE". It has a menu bar with "File" and "Help". The main area is a code editor showing FoxScript code with syntax highlighting. The code is as follows:

```
1 <
2
3 private void IncreaseBuffer();
4
5 {
6   with Current as Foxlight.BufferCode
7     int 1 = BUFFER_SLOW
8     int 2 = BUFFER_MEDIUM
9     int 3 = BUFFER_FAST
10    return Current
11  }
12
13 {
14   try
15   if Current = 1
16   block1 = byte(0)
17   block2 = byte(1)
18   do
19     data = (long(block1 + block2)) / (short(block1 - block2))
20     Split Foxlight.BufferData(data)
21     while Foxlight.Buffering(isRunning)
22
23   catch Foxlight.Exception(whileBuffering)
24     throw mbox = [new Foxlight.Exception]
25   }
26   {
27     else Current = 2
28     block1 = byte(1)
29     block2 = byte(2)
30
31 >
```

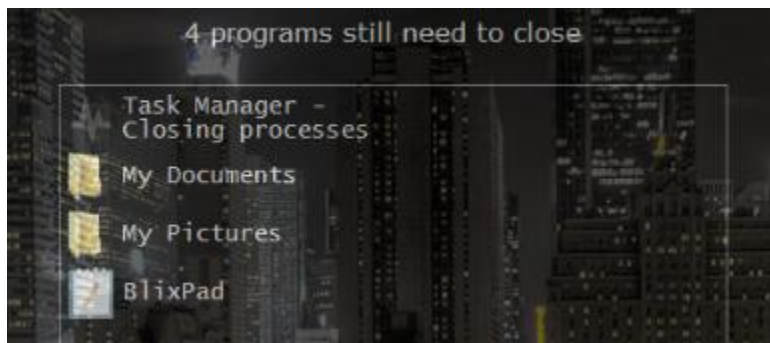
```
2
3 private void IncreaseBuffer();
4
5 {
6   with Current as Foxlight.BufferCode
7     int 1 = BUFFER_SLOW
```

*Syntax Highlighting has been enabled to make the coding more easy.*

## Pre-Shutdown Screen



This screen appears just before the shutdown is to be started. It acts like a splash screen, notifying users what is being done while shutdown is being started.



*This box shows the applications that were not closed by you. BlixOS tries to close these applications and if it fails then it shows you a button to 'Force' shutdown or 'Return' to close those applications manually.*

# Notes and Notice

---

Now, as you have finished reading this documentation . . . Many questions may have come to your mind, like – “Some features have not been shown here” or “Which language is BlixOS made”.

The answers to the first two questions is very simple – 1. Some features have not been shown as they are under development and are top secret. 2. BlixOS has been written using many languages such as C/C++, Python, Java, VB.NET, C#, F#, to name a few.

We are forbidden to reveal more information about BlixOS Professional yet we managed to show some of the features to the people. When BlixOS Professional’s development reaches 90%, we’ll definitely launch the first beta version of it to the people who always wanted to test it since they read this documentation. If you are still confused or have questions in your mind, feel free to contact the Support and Assistance Centre at:

[For questions and support -](#)

[Support and Assistance Centre](#)

C/o Blix Corporation  
H-72, Sector 41  
Golf Links  
Noida (U.P)  
201303

[For any other query -](#)

[Information Centre](#)

C/o Blix Corporation  
901/4  
KailashDham Apartments  
Sector-51  
Noida  
201305

[Phone Support](#)

**Kshitij:** +919999652075 and 0120-4340449

**Suyash:** +919350123631 and 0120-4313069

[Email Support](#)

[suyash@studyblix.com](mailto:suyash@studyblix.com)

[kshitij@studyblix.com](mailto:kshitij@studyblix.com)